

Key switch

Digital temperature display

Minimum/maximum temperature memory

Forced-air cooling

Visual and audible alarm signal

Comfortable access

4 Shelves

Connection for forwarding alarms and for PC-supported temperature documentation

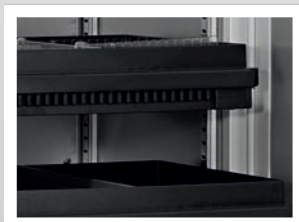
2 conductive drawers to prevent static charges

Automatic defrosting

Antifreeze



LABEX®-340



Increased safety

Use of conductive height adjustable drawer with adjustable interior.



Ventilation slit

Improve the refrigerating machine's ventilation and is easy to clean. It is now easier to integrate the system into a clean room or existing furniture.

LABEX[®] -



335/-340

- **External housing** made from galvanised sheet steel (rust-proof), with white, anti-scratch powder coating. Length of the plug cable: approx. 1.8 m.
- **Adjustable feet** at the front to compensate for uneven floors.
- **Interior** made from smooth aluminium with colourless protective coating. Gibs (every 15 mm) for flexible interior arrangement.
- **Interior consists** of two conductive drawers with stops on roller runners and four height adjustable shelves on overlays. There are two adjustable length divider and nine adjustable cross dividers per drawer. Storage surface per drawer = 0.16 m².
- **Extra-thick 55-mm insulation**, made from high-quality, compression-moulded and environmentally friendly material. Energy saving.
- **Self-closing door** with easy-to-replace plastic magnetic seal frame, lockable.
- **Door stop** on the right-hand side (by default, see illustration), or the left-hand side, can be retrofitted.
- **Automatic defrosting** with time limit and temperature monitoring.
- **Removable condensation container.**
- **Key switch** protected control panel against tampering. Membrane keyboard with digital temperature display and minimum/maximum temperature memory. Control and display sensors protected by safety barriers.
- **Warning functions** with visual and audible alarm signal in the case of temperature deviation.
- **Alarms** can be forwarded using a potential-free contact (e.g., to a mobile phone with optional GSM module or to a control centre).
- **RS485 interface** for connecting to PC-supported temperature documentation (using the optional PC-KIT).
- **Antifreeze** against sub-zero temperatures.
- **Statically ventilated refrigerating machine**, hermetically sealed, energy saving, low noise, easy to service.

***LABEX[®]-340 additional equipment:**

- **Forced-air cooling** (axial fan is protected), switches off automatically when you open the door, ensures a uniform temperature and minimises temperature deviations.

Specification

	LABEX [®] -335	LABEX [®] -340
Capacity	330 litres	330 litres
Temperature setting	approx. +2 °C to +20 °C	approx. +2 °C to +20 °C
Voltage	220 – 240 V, 50/60 Hz	220 – 240 V, 50/60 Hz
Power consumption	120 watts	130 watts
Normal consumption	0.90 kWh/24 h	1.00 kWh/24 h
Admissible ambient temperature	from +10 °C to +38 °C	from +10 °C to +38 °C
Heat emission (max.)	160 watts	167 watts
Exterior dimensions (including door handle and distance from wall)	w x d x h = 67 x 63 x 181 cm	w x d x h = 67 x 63 x 181 cm
Interior dimensions	w x d x h =* 53 x 45 x 128 cm	w x d x h =* 53 x 45 x 128 cm
Exterior dimensions with door open at 90°	w x d = 67 x 121 cm	w x d = 67 x 121 cm
Shelfsize	w x d = 52 x 39 cm	w x d = 52 x 39 cm
Drawer inner dimensions	w x d x h = 50 x 32 x 5.6 cm	w x d x h = 50 x 32 x 5.6 cm
Max. load drawer/shelf	16 kg/40 kg	16 kg/40 kg
Weight	Net weight 90 kg, gross weight 102 kg	Net weight 93 kg, gross weight 105 kg

*usable depth 5 cm less.

Optional equipment

- **Glass door with lock.**
- **Power failure alarm** (visual and audible alarm), the monitoring unit remains in operation for approx. 72 hours on battery power.
- **Decorative door frame** for attaching the customer's decorative plates.
- **Door fitting** (2 pieces required).
- **Equipped with castors.**
- **Drawer on roller runners** (a maximum of 12 drawers is possible).
- **Additional length and cross dividers** (for drawer).
- **Additional shelf** on rails or overlays.
- **GSM module** for alarm text message transmission (e.g., to a mobile phone).
- **Temperature documentation:** see detailed information on page 56.